

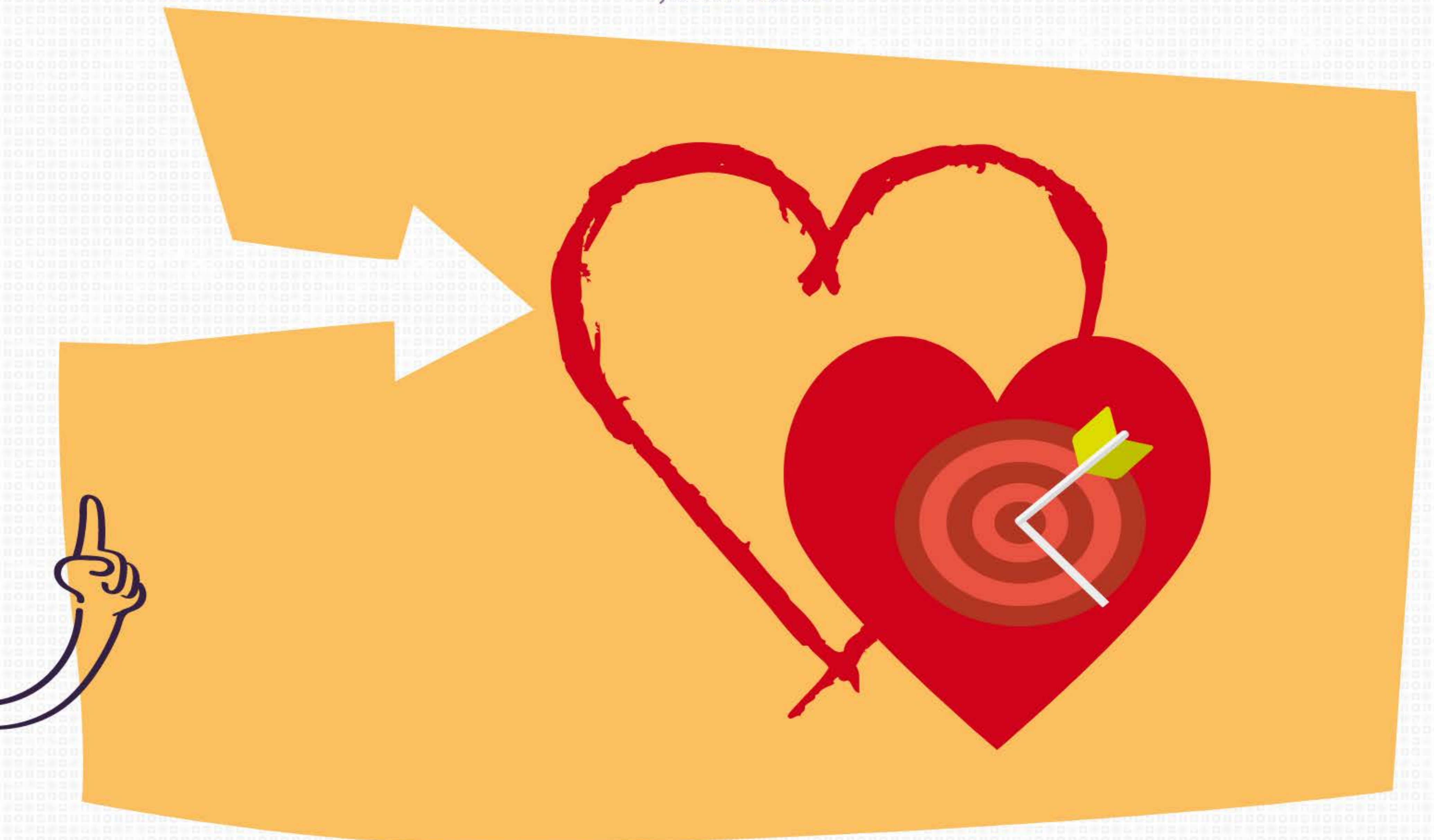
# Faith Based Lesson Planning: Thinking Backwards

“

A NEW COMMANDMENT I GIVE YOU: LOVE ONE ANOTHER.  
AS I HAVE LOVED YOU, YOU MUST LOVE EACH OTHER.

”

- JOHN 13:34





# How is typical lesson planning different from backwards planning?

## 1. The Starting Place



Backwards planning starts with the learners' **SUCCESS**. Not how the teacher will roll out the session to the young people.

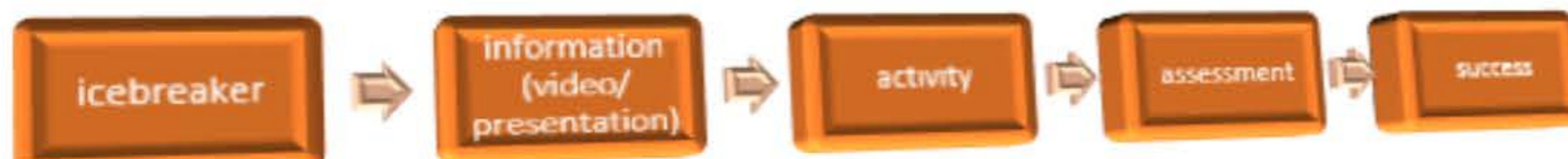
## 2. The Focus the planning takes

Everything points back to the **SUCCESS** of the **LEARNER**. You work backwards to plan how to make it happen.

**Learner centered.**  
**NOT teacher centered**

### Typical Lesson Planning Process

Focus is on order of delivery



**Teacher- Centered**

### Backwards Design Planning Process

Focus is on success



**Learner- Centered**

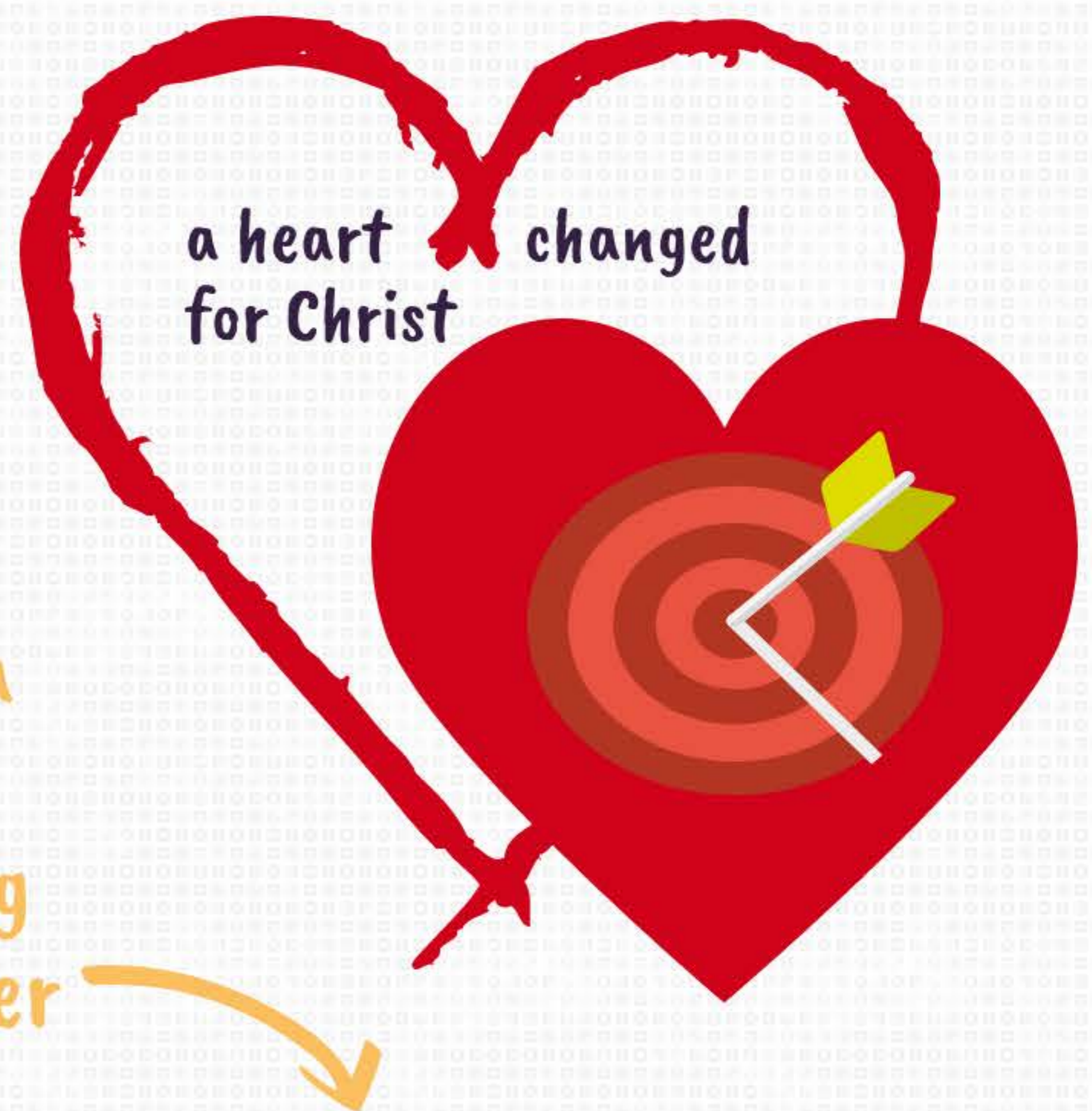


---

Why does it matter?

For a faith based  
experience,  
**SUCCESS =**

demonstrated through a  
faith based action  
response taken by young  
people in their lives after  
the experience.



**Everything we do from this  
point on in the planning  
process, will be in an effort  
to hit this target!**